

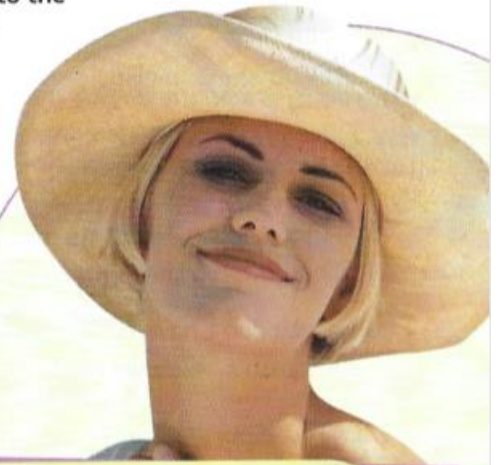
# Modal verbs (modals)

## POVINNÁ ČÁST:

**3** Circle the correct item in bold.

- 1 You must / **can** wear a seatbelt while in a car. It's the law.
- 2 We **don't have to** / **can't** wake up early tomorrow. It's a holiday.
- 3 You **mustn't** / **don't have to** shout at the children. It upsets them.
- 4 Tom **should** / **can** study harder if he wants to pass his exams.
- 5 You **can** / **must** leave early today if you want to.
- 6 You **mustn't** / **don't have to** enter the area.
- 7 Carol **could** / **is able to** speak six languages.
- 8 If it gets colder tomorrow, it **has to** / **might** snow.

**4** You are going to the beach for the day. Look at the list and make sentences with *must* and *mustn't*.



- |   |                                  |   |
|---|----------------------------------|---|
| 1 | wear a hat                       | ✓ |
| 2 | put on suntan lotion             | ✓ |
| 3 | sunbathe between midday and 3 pm | X |
| 4 | drink plenty of water            | ✓ |
| 5 | eat before you swim              | X |
| 6 | sit under an umbrella            | ✓ |
| 7 | leave any rubbish behind         | X |

1 ► *You must wear a hat.*

**5** Match the sentences a-f to the rules in the box, then act out short dialogues.

### When you go sailing

- 1 ☒ **c** Always check the weather forecast.
- 2 ☐ Tell someone where you are going.
- 3 ☐ Take warm, waterproof clothing with you.
- 4 ☐ Never go sailing without a life jacket.
- 5 ☐ Never sail close to rocks.
- 6 ☐ Don't sail near swimmers.



- a It could get cold.
- b You might get into trouble and nobody will know where you are.
- c You could sail into a storm.
- d You could hurt somebody.
- e You might fall into the water and drown.
- f You could hit one and destroy your boat.

► *A: Why should I always check the weather forecast?*  
*B: Because you could sail into a storm.*

**7** Fill in the gaps with the expressions in the list. Then, match the sentences to the responses.

- you don't have to • can • must • could
- mustn't • do we have to

- 1  **b** **Can** I go to Mark's party this weekend?  
 2  ..... to bring a camera. I have one.  
 3  You ..... do that again. It was very naughty.  
 4  ..... pay for swimming lessons?  
 5  ..... you help me with these books?  
 6  You ..... pay the bills today.

- a Yes, they aren't free.  
 b Maybe. We'll see.  
 c Oh that's great.  
 d Of course I will.  
 e I know. I won't forget.  
 f I'm sorry!

**8** Choose the correct item.

- 1 ..... you make a photocopy of this, please?  
 A Should **B Could** C Must  
 2 You ..... take things without permission.  
 A mustn't B couldn't  
 C don't have to  
 3 Fortunately, he didn't ..... see a doctor.  
 A have to B must C may  
 4 Tanya ..... to beat her opponent.  
 A can B should C was able  
 5 You ..... bring an umbrella. It's not raining.  
 A don't have to B mustn't  
 C can't  
 6 You can go but you ..... be back by 10:00 pm.  
 A might B must C can

## DOBROVOLNÁ ČÁST:

**1** Match the modal verbs in bold to their meanings (a-j).

- 1  **e** You **can** go outside and play with your friends.  
 2  I **might** finish my work by 4 o'clock.  
 3  You **must** be here by 8:30 tomorrow morning.  
 4  You **shouldn't** talk to strangers.  
 5  You **have to** wear a seatbelt.  
 6  You **don't have to** cook dinner this evening.  
 7  Can you take the rubbish out, please?  
 8  You **mustn't** walk on the grass.  
 9  Can I make a phone call?  
 10  You **should** accept the job.

- a It's not a good idea. f It's forbidden.  
 b It's a rule/law. g It's not necessary.  
 c It's a good idea. h Is it OK?  
 d It's a responsibility. i It's possible.  
 e It's allowed. j It's a request.

**2** Choose the correct item.

- 1 A: I don't feel very well.  
 B: I think you should/can lie down for a bit.  
 2 A: **Can/Must** I bring my mobile phone to school?  
 B: No, you **can/can't**. You **don't have to/ mustn't** bring it to school.  
 3 A: I **have to/can** lose weight.  
 B: You **should/might** join a gym.  
 4 A: **Must/Can** we take photos in the gallery?  
 B: No, the sign on the wall says you **don't have to/mustn't**.  
 5 A: **Were you able to/Could** you finish the race?  
 B: Yes, but it was difficult.  
 6 A: I'm really tired tonight.  
 B: You **should/have to** have an early night.  
 7 A: Dad, **can/should** we have a party on Saturday?  
 B: Yes, but you'll **have to/can** clean up afterwards.  
 8 A: Where's Bill?  
 B: He **might/can** be in the garage.